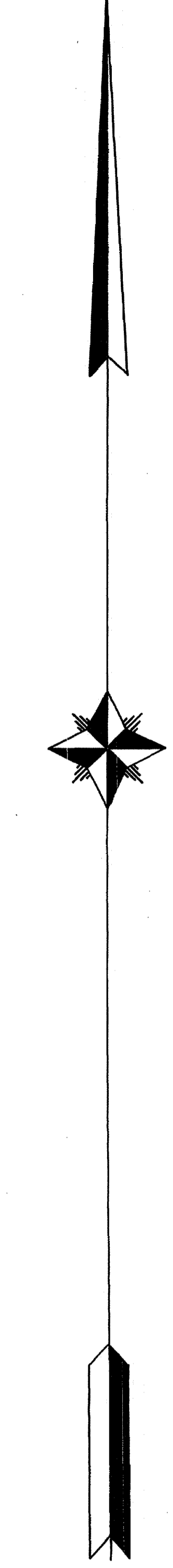
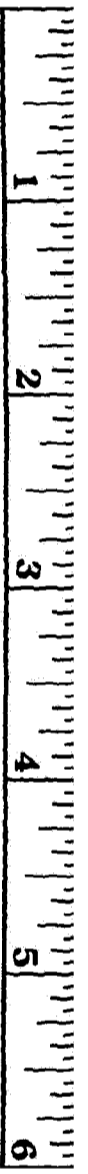


PLAT
OF
PROPERTY OF
PHILIP EDWARDS.
(DECEASED)
FIFTEENTH DISTRICT
BALTIMORE COUNTY
MARYLAND.



FROG

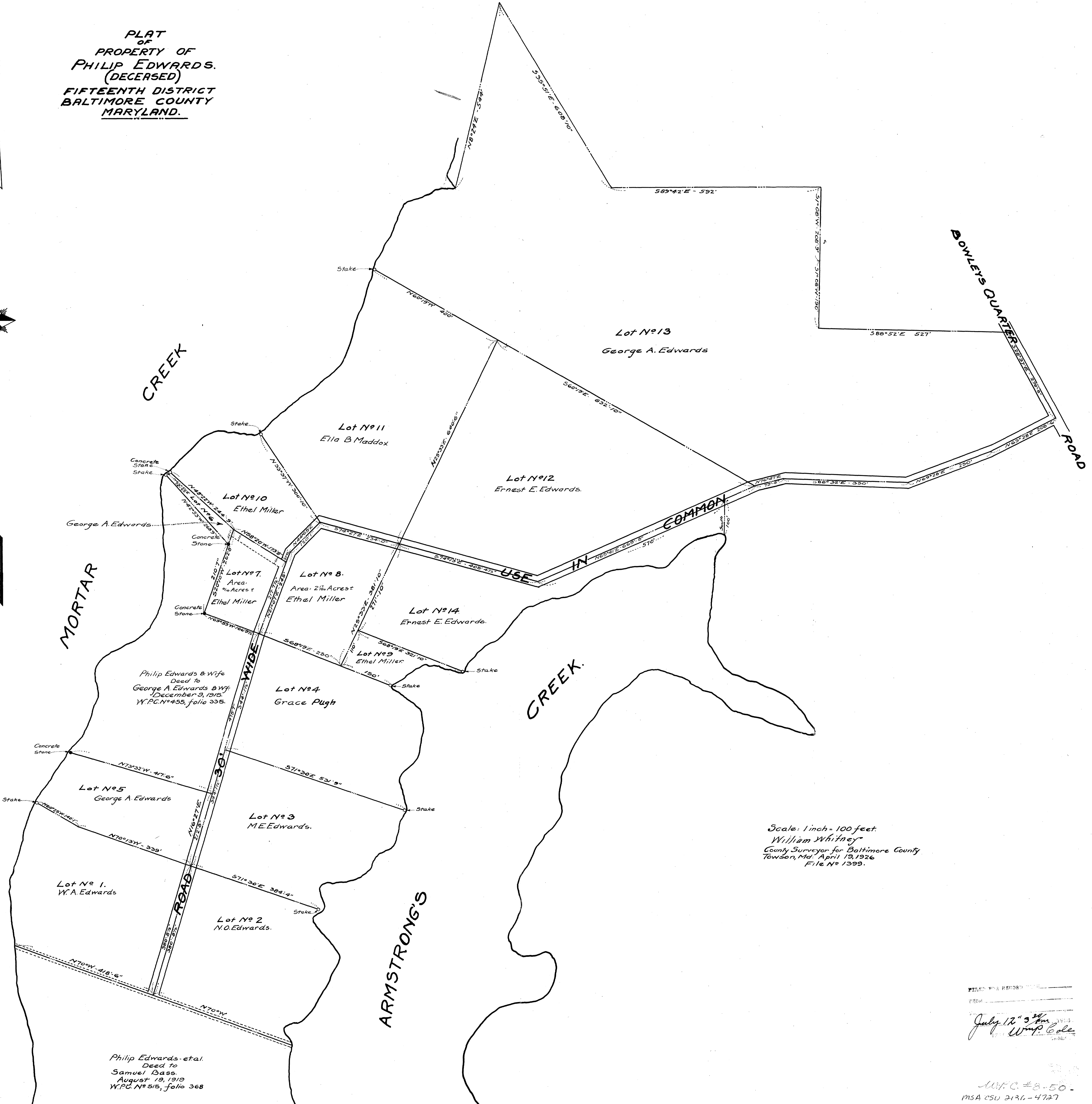
MORTAR

CREEK

CREEK

ARMSTRONG'S

BOWLEYS QUARTER ROAD



Philip Edwards & Wife
Deed to
George A. Edwards & Wf.
December 9, 1915.
W.P.C. N° 455, folio 335.

Philip Edwards-etal.
Deed to
Samuel Bass
August 19, 1919
W.P.C. N° 515, folio 368

Scale: 1 inch = 100 feet
William Whitney
County Surveyor for Baltimore County
Towson, Md. April 13, 1926
File N° 1399.

FILED FOR RECORD
FROM
July 12th 1926
Wm. C. Cole

W.P.C. #8-50
MSA CSU 2136-4727